

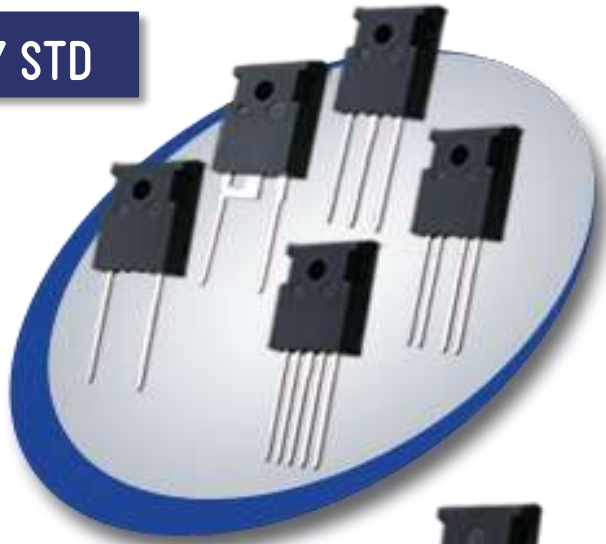


PACKAGING CAPABILITIES

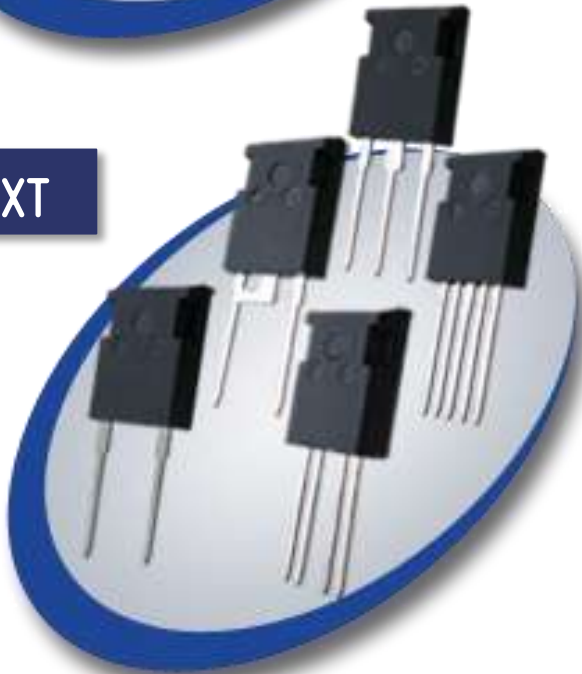
DISCRETE PACKAGES

TO-247

TO-247 STD



TO-247 EXT



PACKAGE SPECIFICATIONS

	TO-247 STD	TO-247 EXT
Package Dimension	1.619 x 0.626 x .198 in 41.12 x 15.90 x 5.03 mm	1.619 x 0.626 x .198 in 41.12 x 15.90 x 5.03 mm
Pad Size	0.292 x 0.492 in 12.50x7.42 mm	0.577 x 0.441 in 14.65 x 11.20 mm
Max. Die Size	0.272 x 0.472 in 12.0 x 6.91 mm	0.536 x 0.471 in 13.64 x 10.70 mm

PRODUCT SPECIFICATIONS

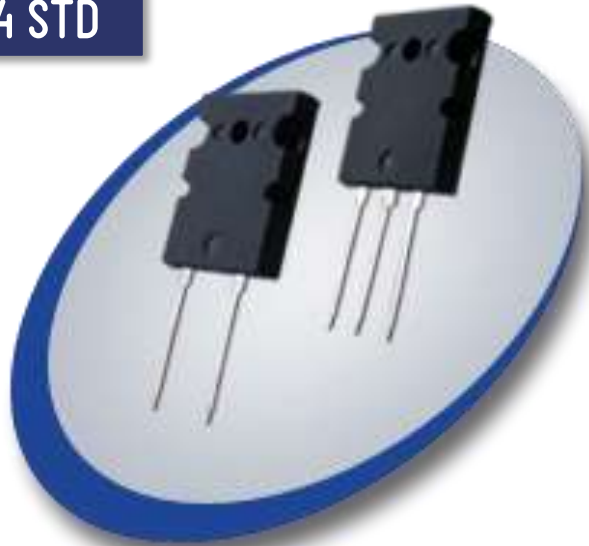
		RATING	UNIT
Power Dissipation		175 - 310	W
Thermal Resistance	Junction to Ambient	40 - 60	°C/W
	Junction to Case	0.4 - 1.5	°C/W
Tc	*Operating Case Temperature	-40 - 125	°C
Electrical Performance	*Voltage Rating	1200 max	V
	*Current rating	75 max.	A

**customer user data*

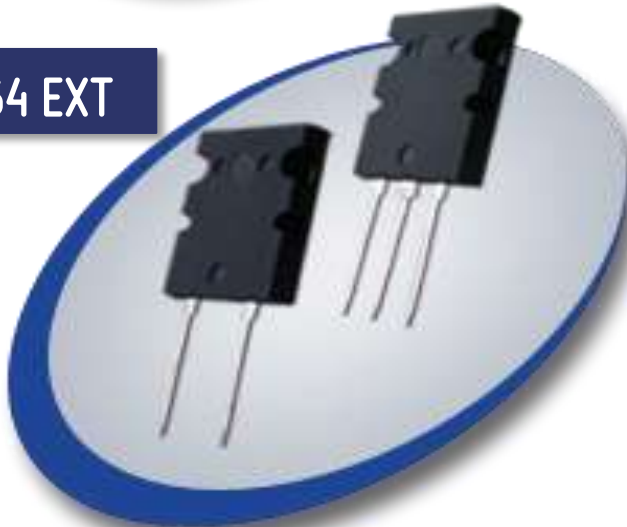
Note: OPEN TOOL Package

T0-264

T0-264 STD



T0-264 EXT



PACKAGE SPECIFICATIONS

	TO-264 STD	TO-264 EXT
Package Dimension	1.832 x 0.783 x 0.196 in 46.53 x 19.89 x 4.98 mm	1.832 x 0.783 x 0.196 in 46.53 x 19.89 x 4.98 mm
Pad Size	0.440 x 0.586 in 14.88 x 11.18 mm	0.668 x 0.500 in 16.97 x 12.70 mm
Max. Die Size	0.420 x 0.566 in 14.38 x 10.57 mm	0.648 x 0.480 in 16.46 x 12.19 mm

PRODUCT SPECIFICATIONS

PRODUCT SPECIFICATIONS		RATING	UNIT
Power Dissipation		200 - 520	W
Thermal Resistance	Junction to Ambient	40	°C/W
	Junction to Case	0.25 - 7.0	°C/W
Tc	*Operating Case Temperature	-40 - 125	°C
Electrical Performance	*Voltage Rating	1200 max.	V
	*Current rating	100 max.	A

**customer user data*

Note: OPEN TOOL Package

SOT-227



Note: OPEN TOOL Package

PRODUCT SPECIFICATIONS		RATING	UNIT
Power Dissipation		100 - 700	W
Thermal Resistance	Junction to Ambient	40	°C/W
	Junction to Case	0.18 - 0.6	°C/W
Tc	*Operating Case Temperature	-40 - 125	°C
Electrical Performance	*Voltage Rating	1200 max.	V
	*Current rating	200 max.	A
Package Isolation		4.5	KV

**customer user data*

PAD B



PACKAGE SPECIFICATIONS

Max. Pad Size	0.500 x 0.700 in 12.70 x 17.78 mm
Max. Die Size	0.460 x 0.660 in 11.68 x 16.76 mm

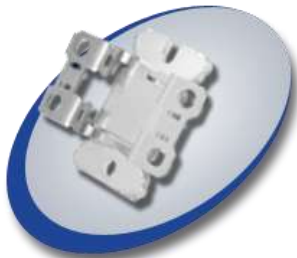
ANTI-PARALLEL



PACKAGE SPECIFICATIONS

Max. Pad Size	0.350 x 0.500 in 8.89 x 12.70 mm
Max. Die Size	0.310 x 0.460 in 7.87 x 11.68 mm

PAD C



PACKAGE SPECIFICATIONS

Max. Pad Size	0.600 x 0.730 in 15.24 x 18.54 mm
Max. Die Size	0.560 x 0.690 in 14.22 x 17.52 mm

PARALLEL



PACKAGE SPECIFICATIONS

Max. Pad Size	0.350 x 0.500 in 8.89 x 12.70 mm
Max. Die Size	0.310 x 0.460 in 7.87 x 11.68 mm

BUCK



PACKAGE SPECIFICATIONS

Max. Pad Size	0.420 x 0.730 in 10.67 x 18.54 mm
Max. Die Size	0.380 x 0.690 in 9.65 x 17.53 mm

PADDLELESS WITH DBC



PACKAGE SPECIFICATIONS

Max. Pad Size	0.717 x 0.720 in 18.21 x 18.29 mm
Max. Die Size	As per design

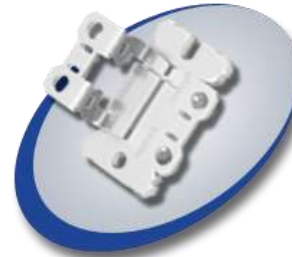
BOOST



PACKAGE SPECIFICATIONS

Max. Pad Size	0.420 x 0.730 in 10.67 x 18.54 mm
Max. Die Size	0.380 x 0.690 in 9.65 x 17.53 mm

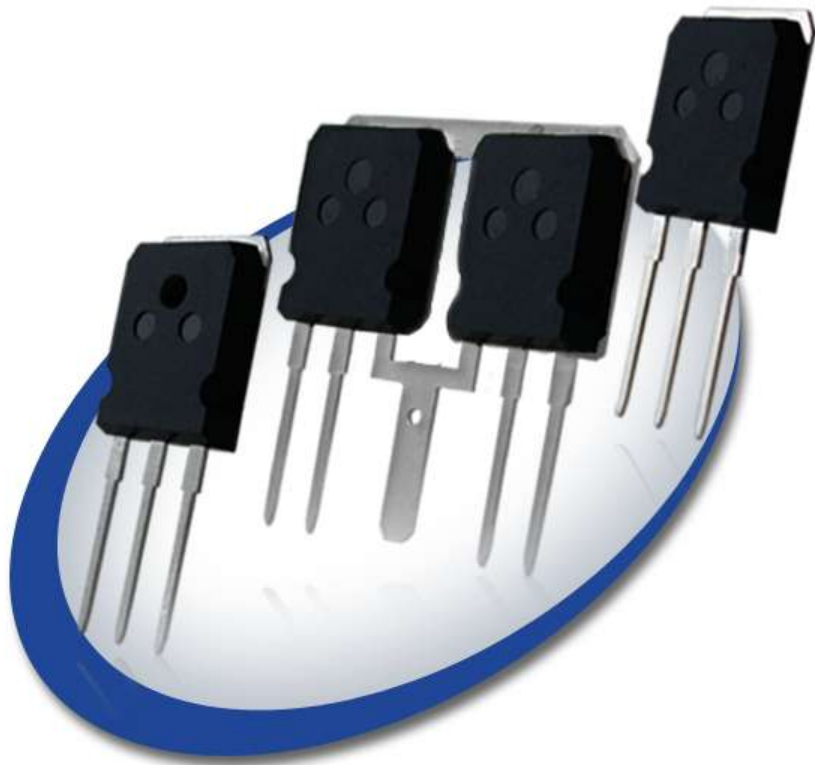
NON ISOLATED



PACKAGE SPECIFICATIONS

Max. Pad Size	0.600 x 0.730 in 15.24 x 18.54 mm
Max. Die Size	0.560 x 0.690 in 14.22 x 17.52 mm

eXp TO-247 "PATENTED"



Note: OPEN TOOL Package

PACKAGE SPECIFICATIONS

	eXp TO-247 STD	eXp TO-247 EXT
Package Dimension	1.662 x 0.626 x 0.198 in 42.21 x 15.90 x 5.03 mm	1.662 x 0.626 x 0.198 in 42.21 x 15.90 x 5.03 mm
Pad Size	0.500 x 0.300 in 12.70 x 7.62 mm	0.500 x 0.575 in 12.70 x 14.61 mm
Max. Die Size	0.460 x 0.245 in 11.68 x 6.22 mm	.402 x 0.556 in 10.21 x 14.12 mm

PRODUCT SPECIFICATIONS

PRODUCT SPECIFICATIONS		RATING	UNIT
Power Dissipation		175 - 310	W
Thermal Resistance	Junction to Ambient	40 - 60	°C/W
	Junction to Case	0.4 - 1.5	°C/W
Tc	*Operating Case Temperature	-40 - 125	°C
Electrical Performance	*Voltage Rating	1200 max.	V
	*Current rating	75 max.	A

**customer user data*

EXT SOT-227 "TEAM-OWNED"



Features:

- High power density: 200 Amperes and 1700 Volts.
- Better packaging for converter and Inverter configuration. It comes with the 4L, 5L and 6L type
- LxWxH mm [inch]: 52.88 [2.082] x 28.19 [1.110] x 13.97 [0.550]

PRODUCT SPECIFICATIONS		RATING	UNIT
Thermal Resistance	Junction to Ambient	40	°C/W
	Junction to Case	0.18 - 0.6	°C/W
Tc	*Operating Case Temperature	-40 - 125	°C
Torque	Terminal Mounting Torque (M3)	1	N.m
Electrical Performance	*Voltage Rating	1700	V
	*Current rating	200	A
	Package Isolation	4.5	KV
	*Power Dissipation	100 - 700	W

Note: OPEN TOOL Package

* customer user data